

**From Registry to Reality:  
Translating DIRR Findings into Practice**

**The National Dental Practice-Based Research Network**  
The nation's network

**Implant Registry**

Joana Cunha-Cruz, DDS, PhD

**UAB**

1

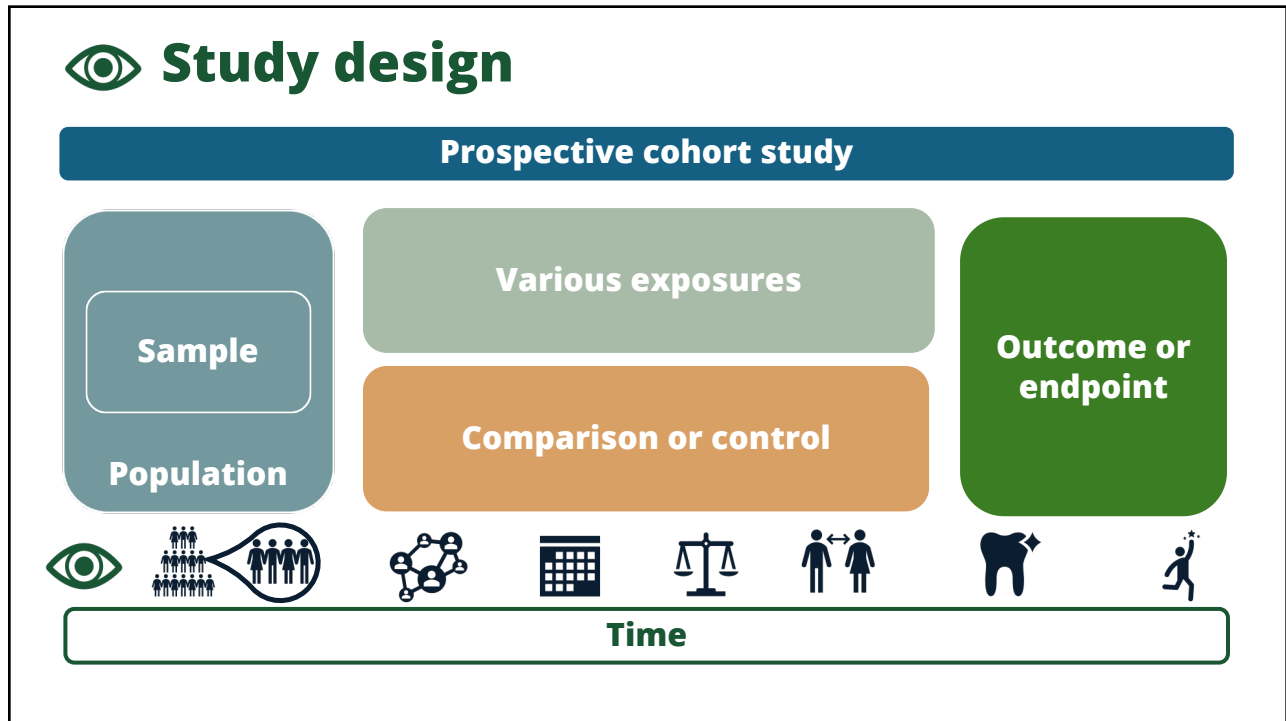
**Presented by:**

**The National Dental Practice-Based Research Network**  
The nation's network

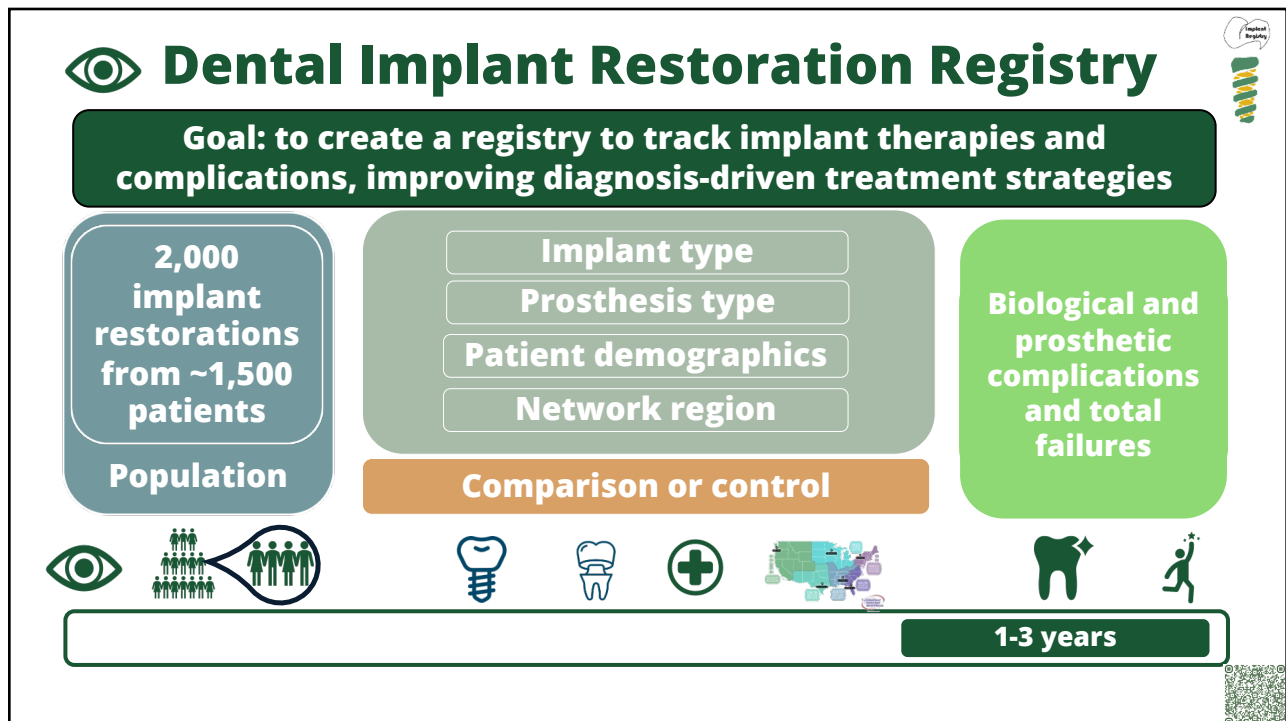
**Joana Cunha-Cruz, DDS, PhD**  
DIRR Principal Investigator (PI)  
National Director of Communication and Dissemination &  
Assistant Director of the South Central Node of the National Dental PBRN  
Professor, Department of Clinical & Community Sciences

**UAB SCHOOL OF DENTISTRY**  
The University of Alabama at Birmingham

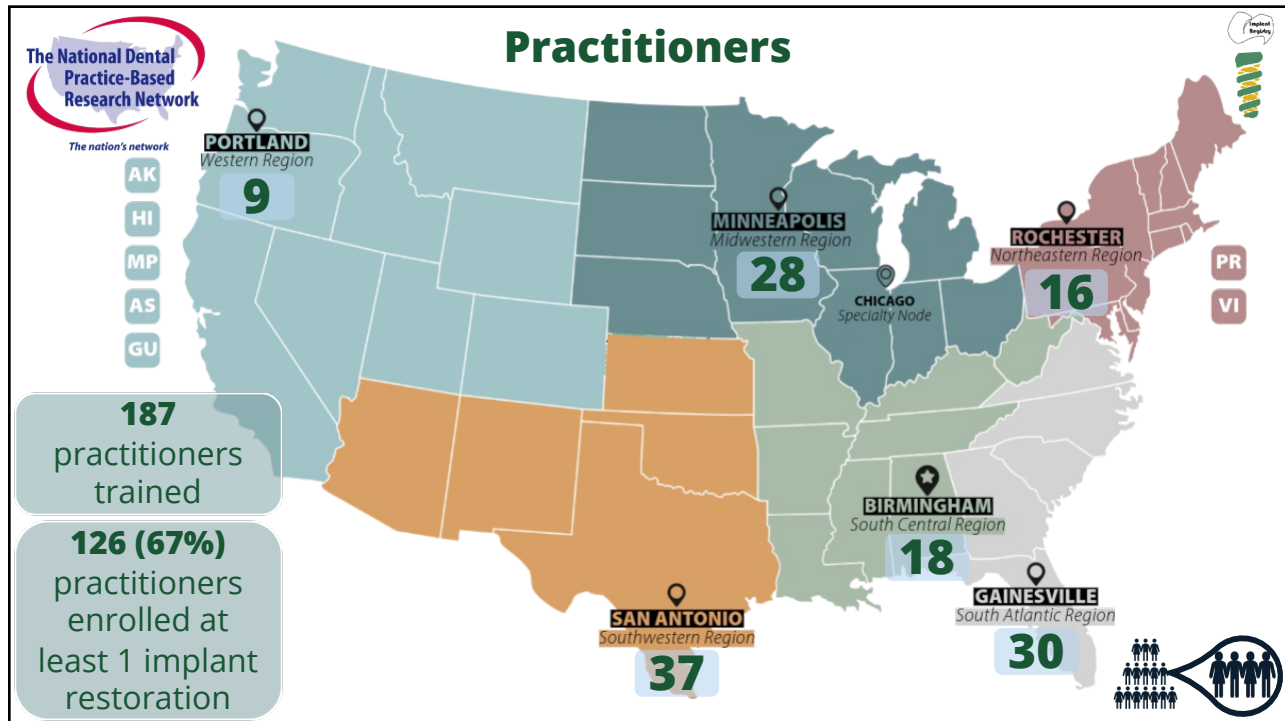
2



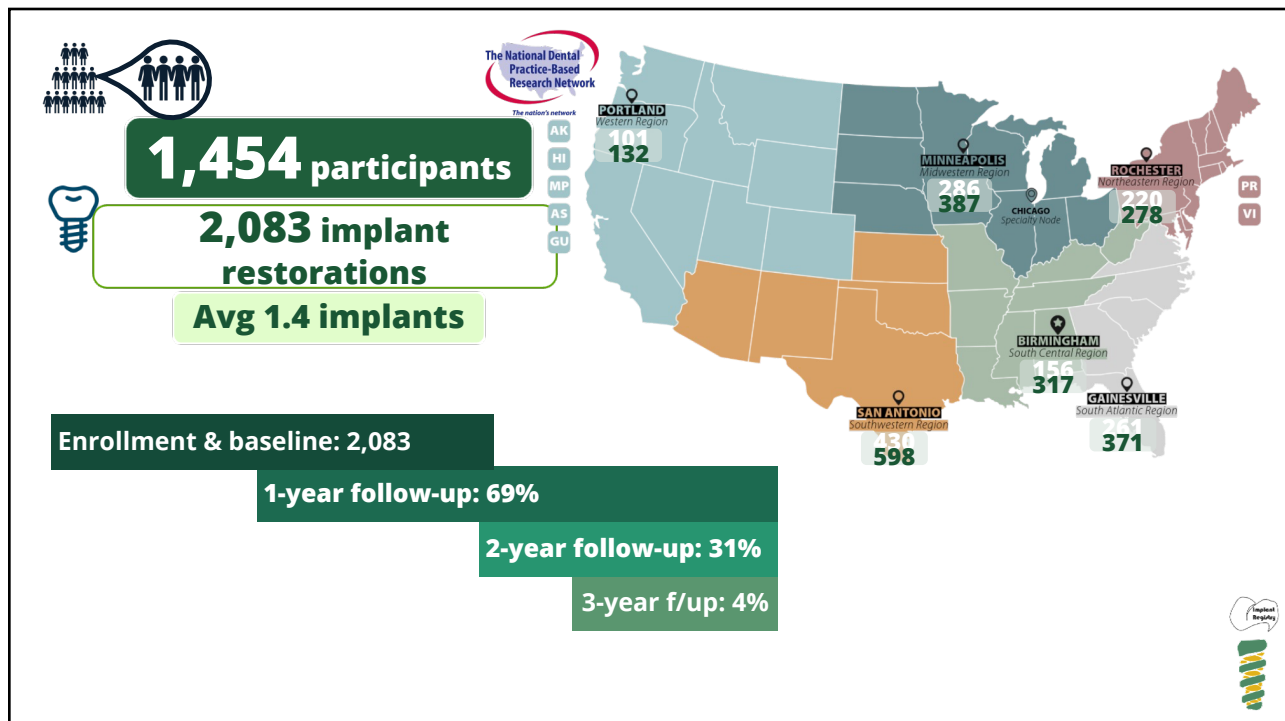
3



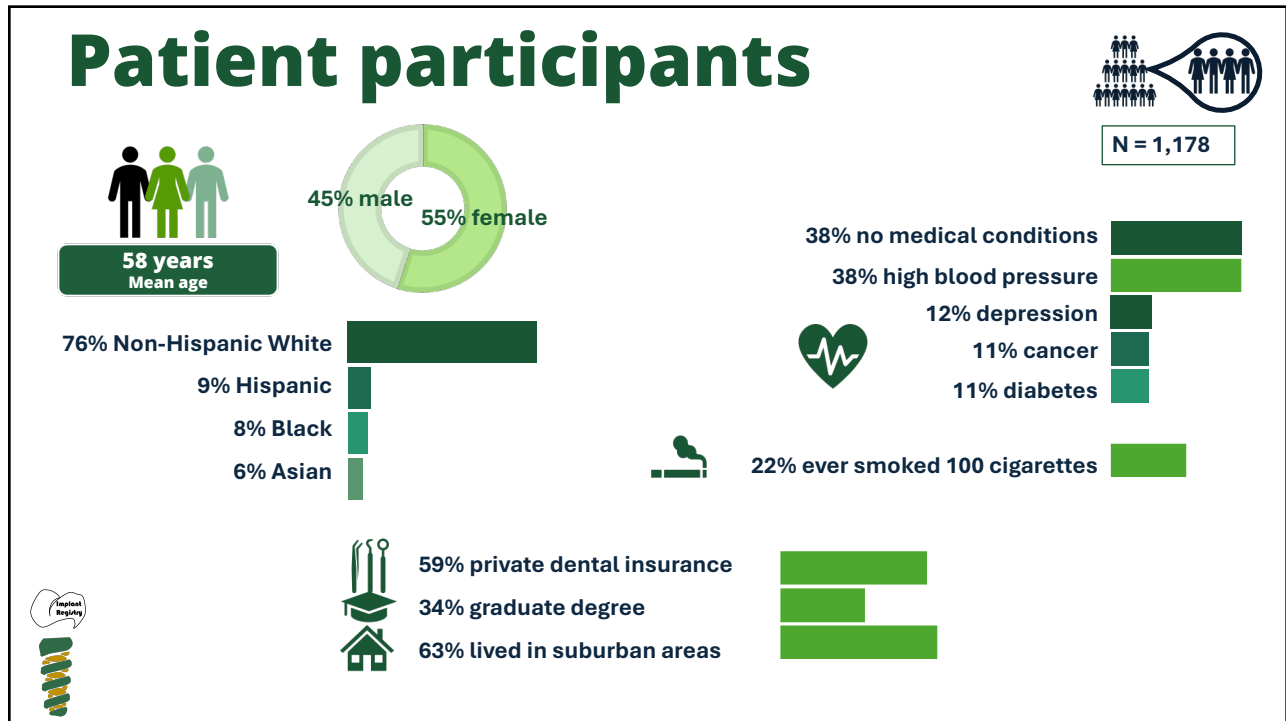
4



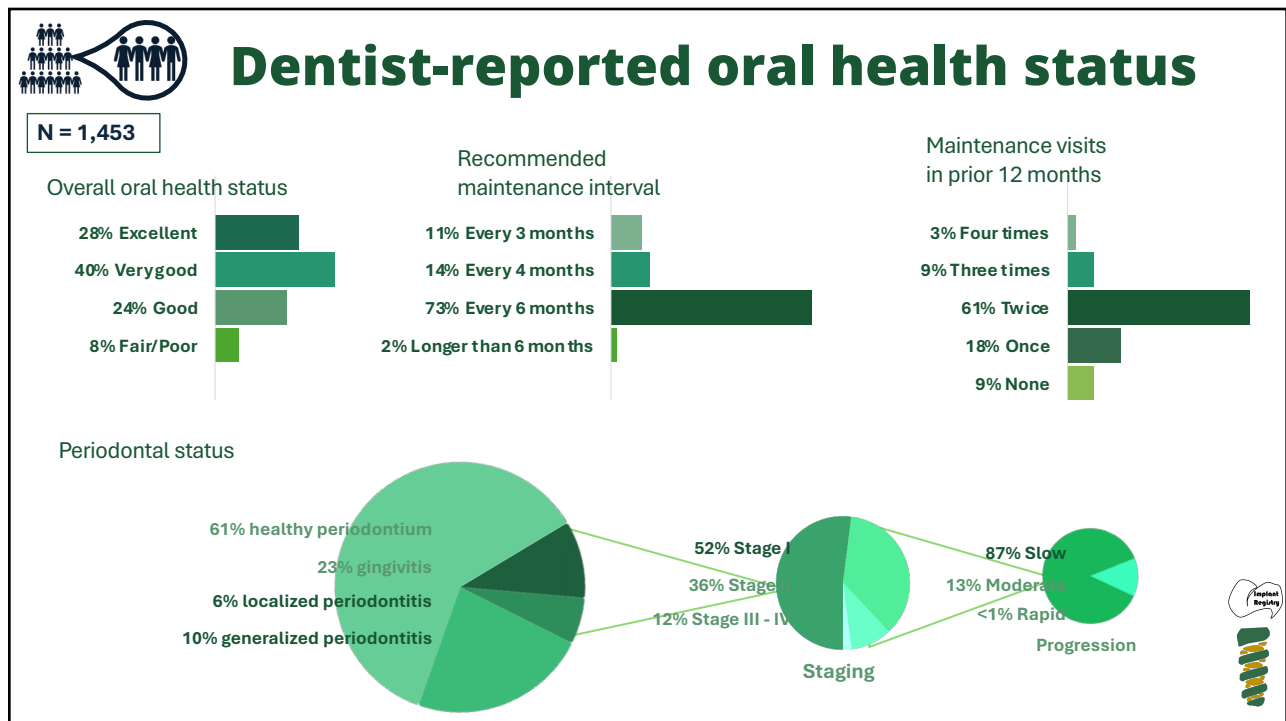
5



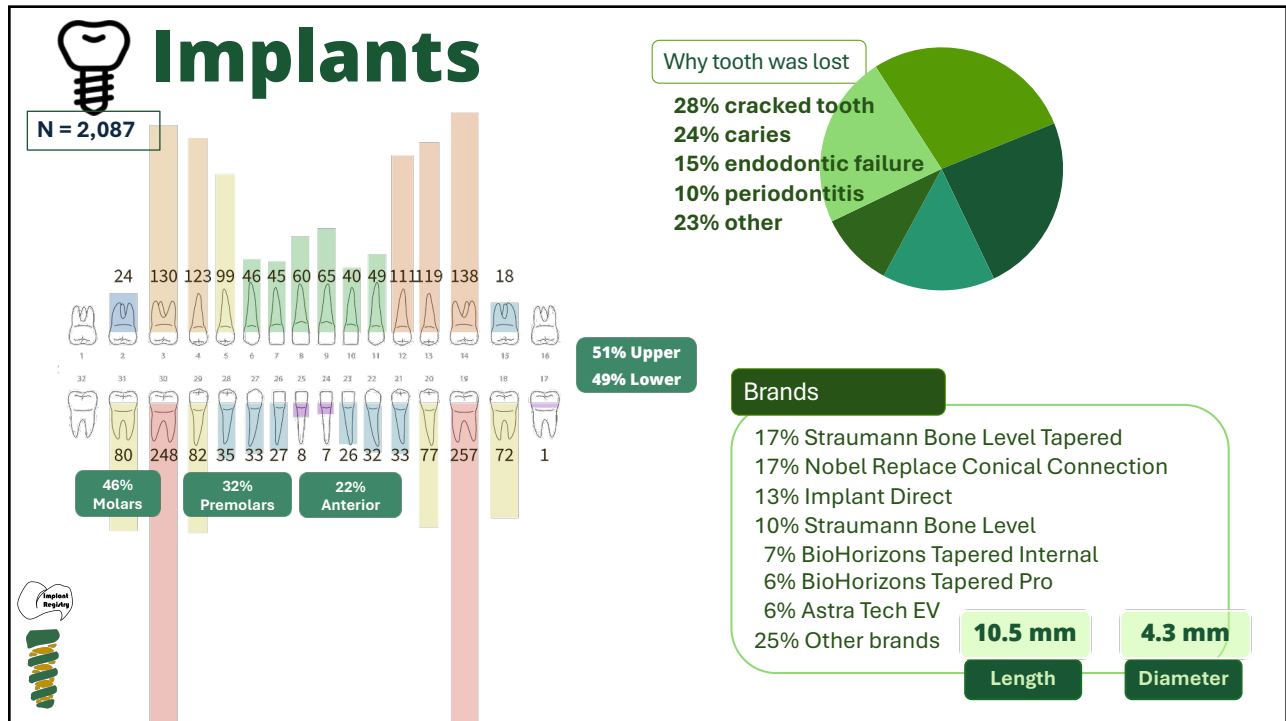
6



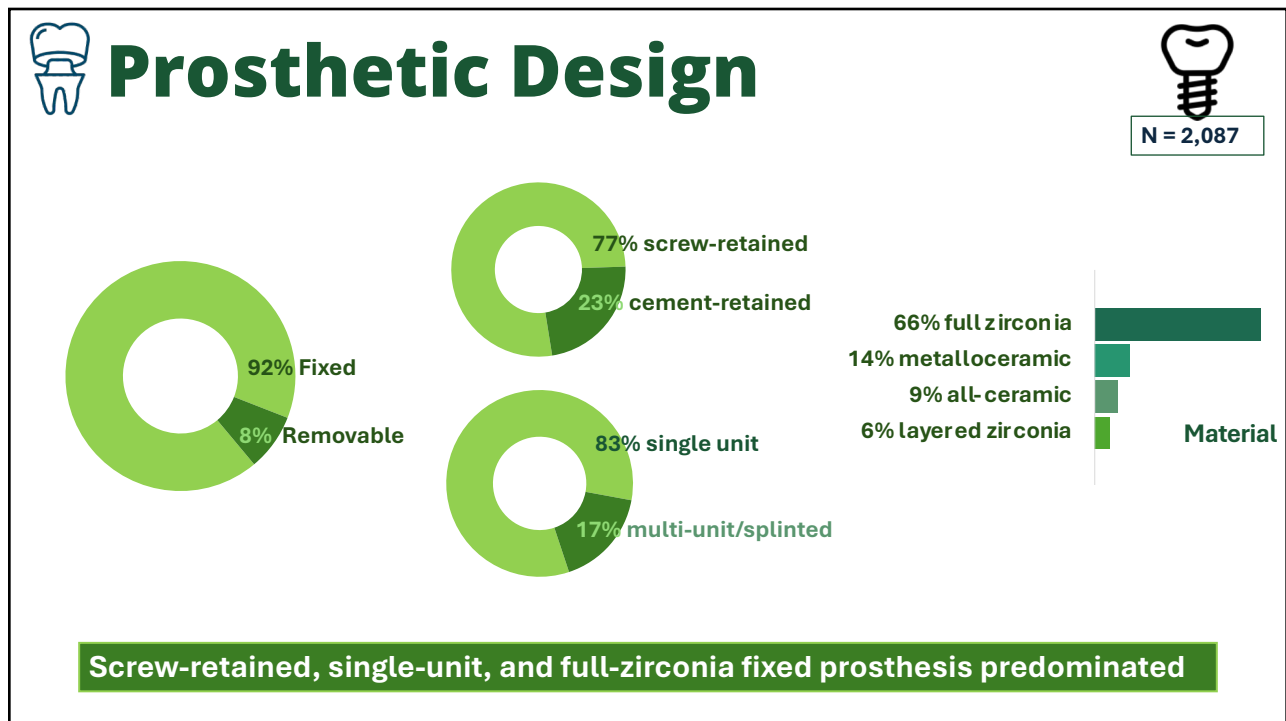
7



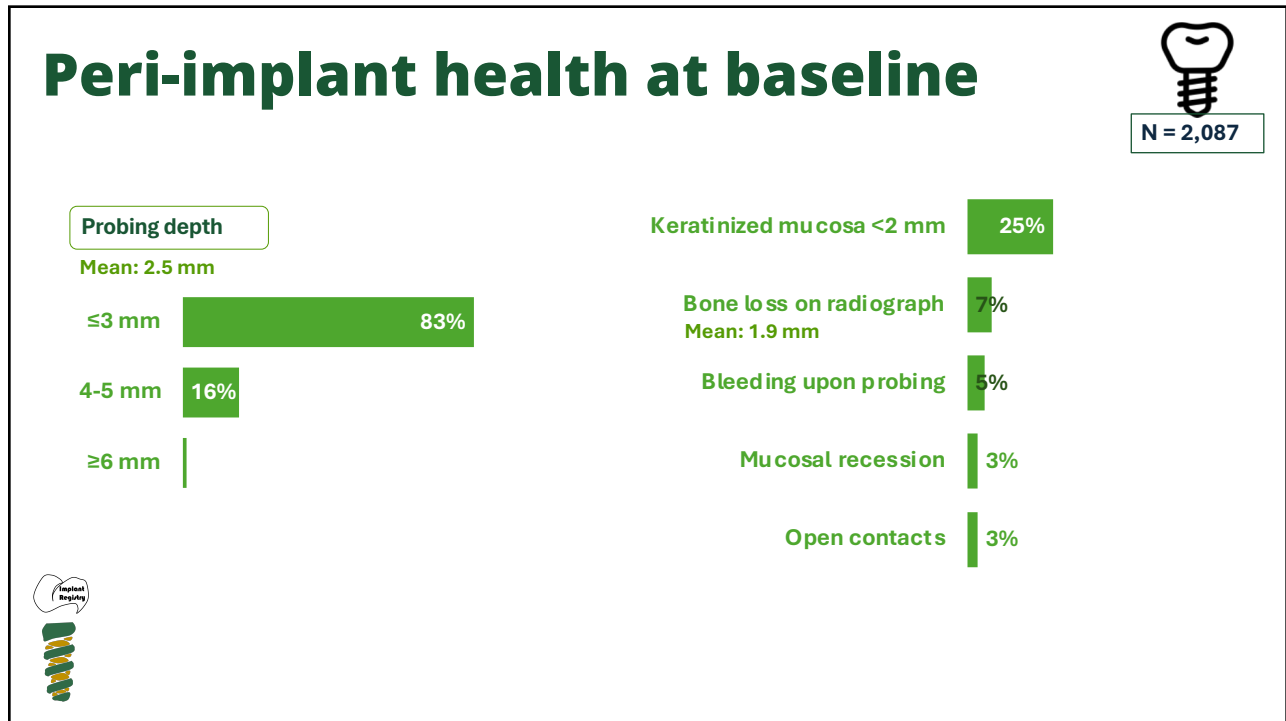
8



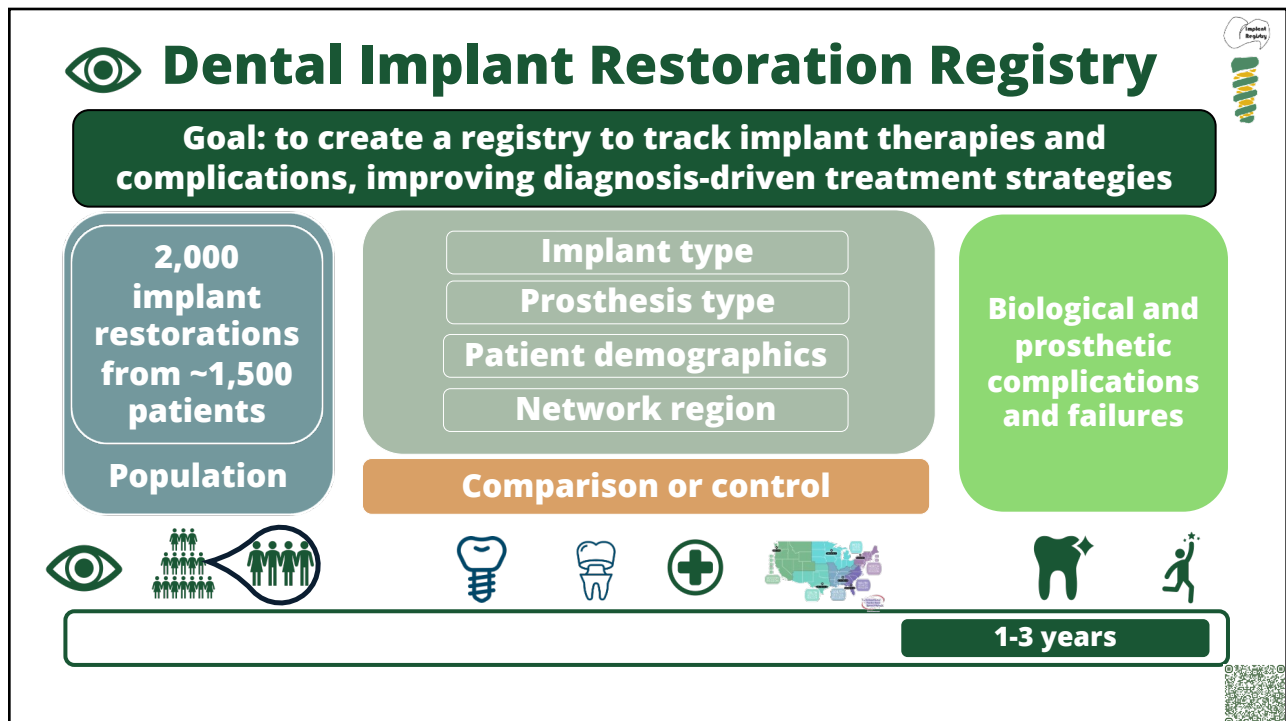
9



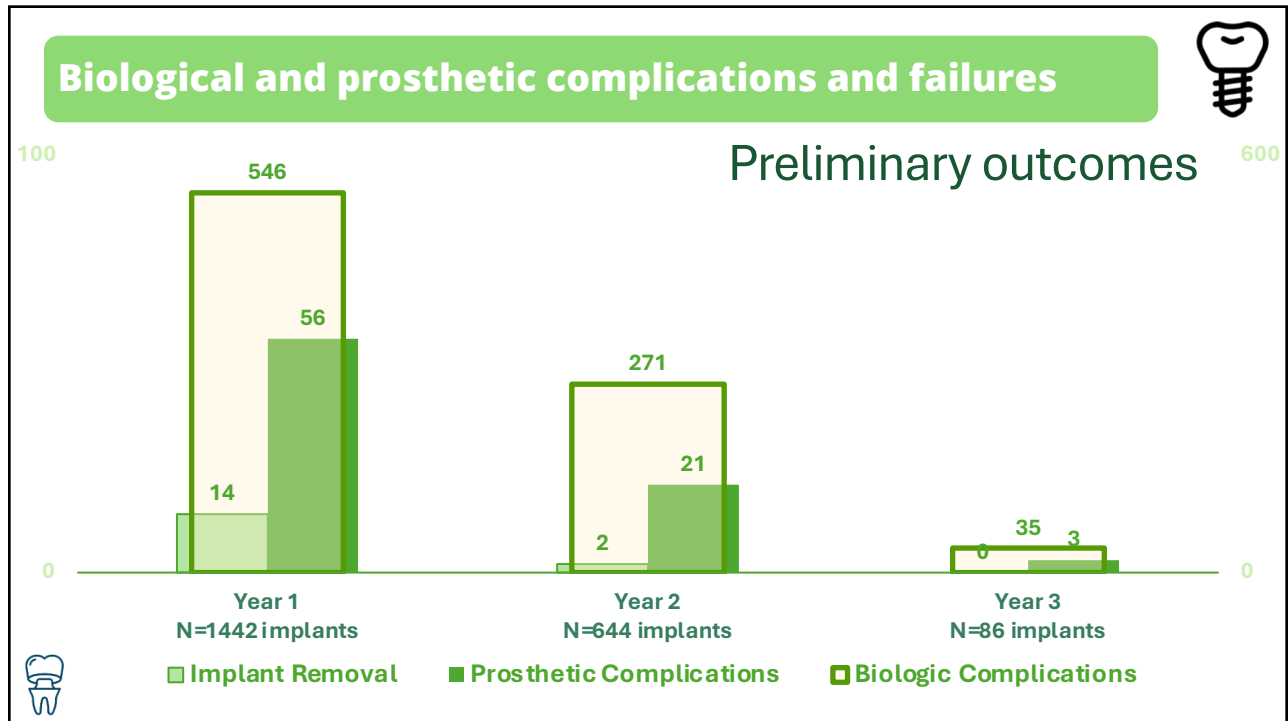
10



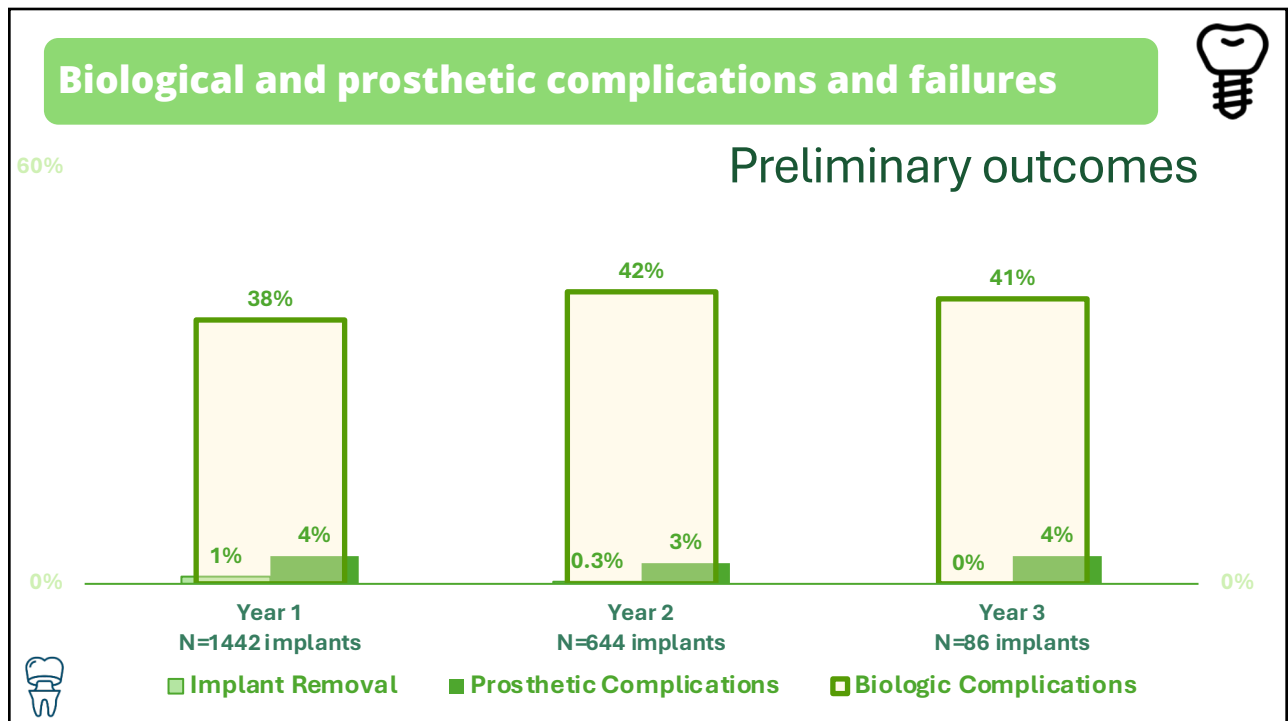
11



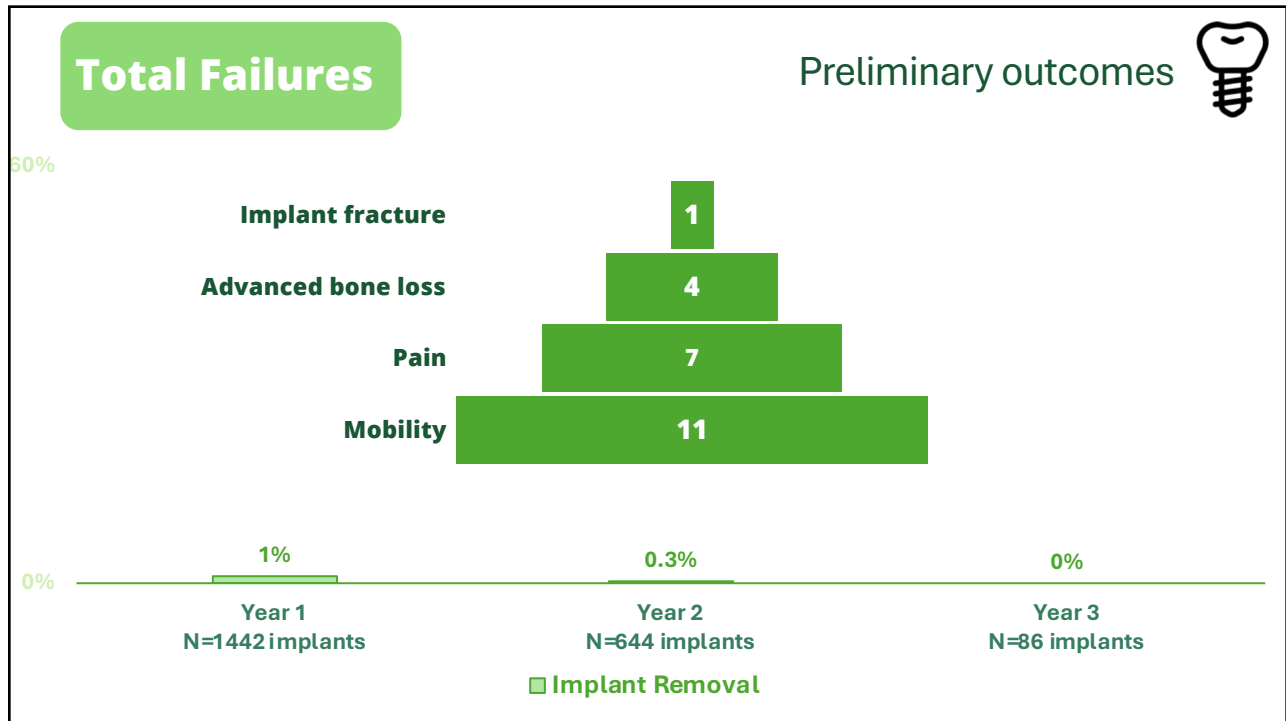
12



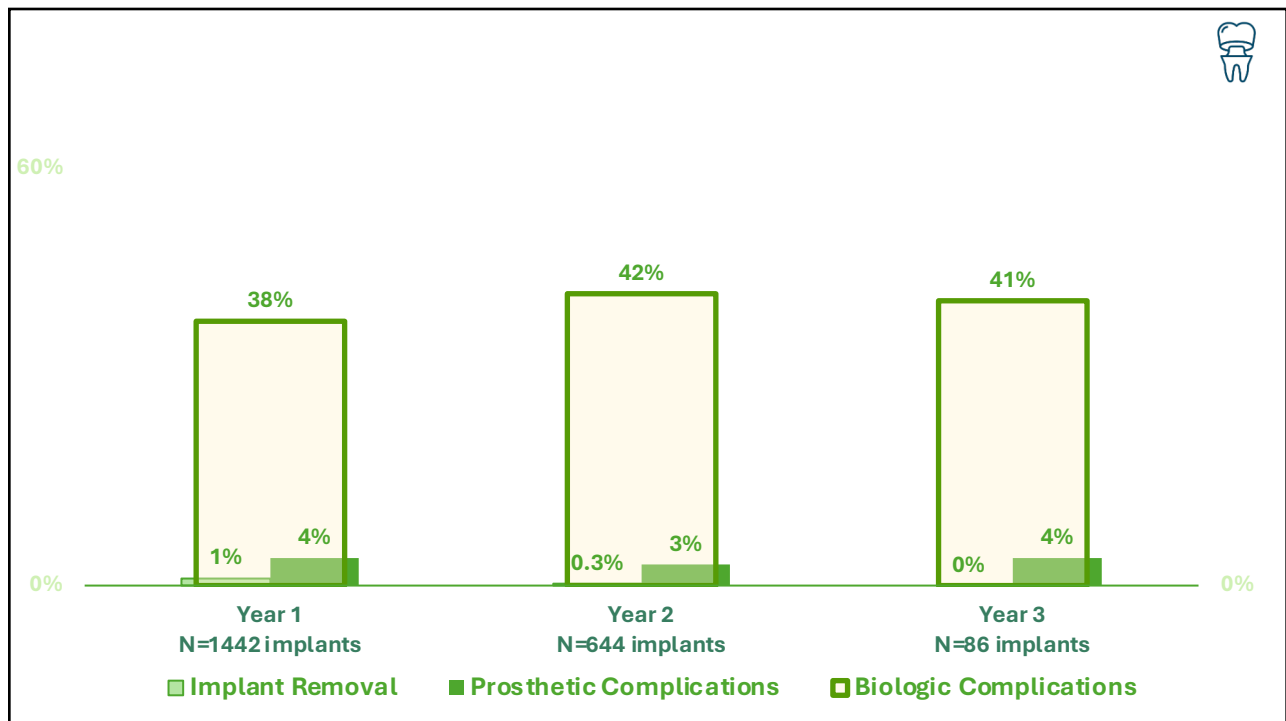
13



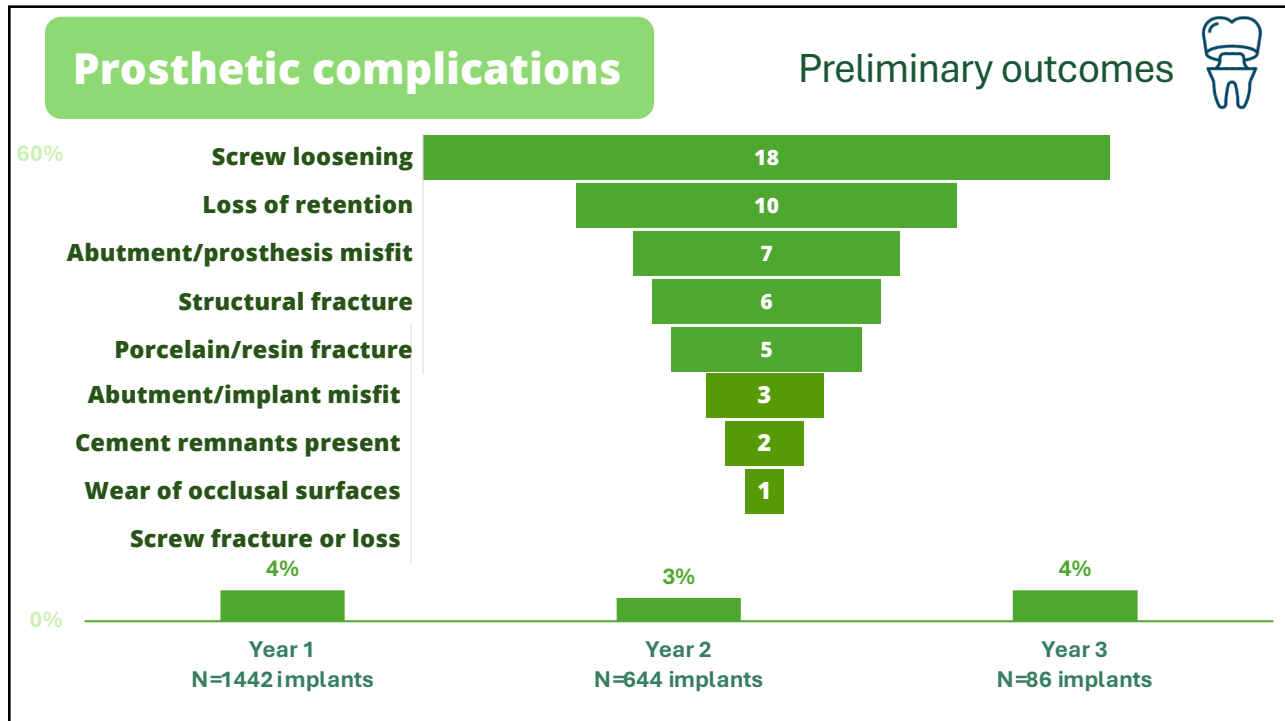
14



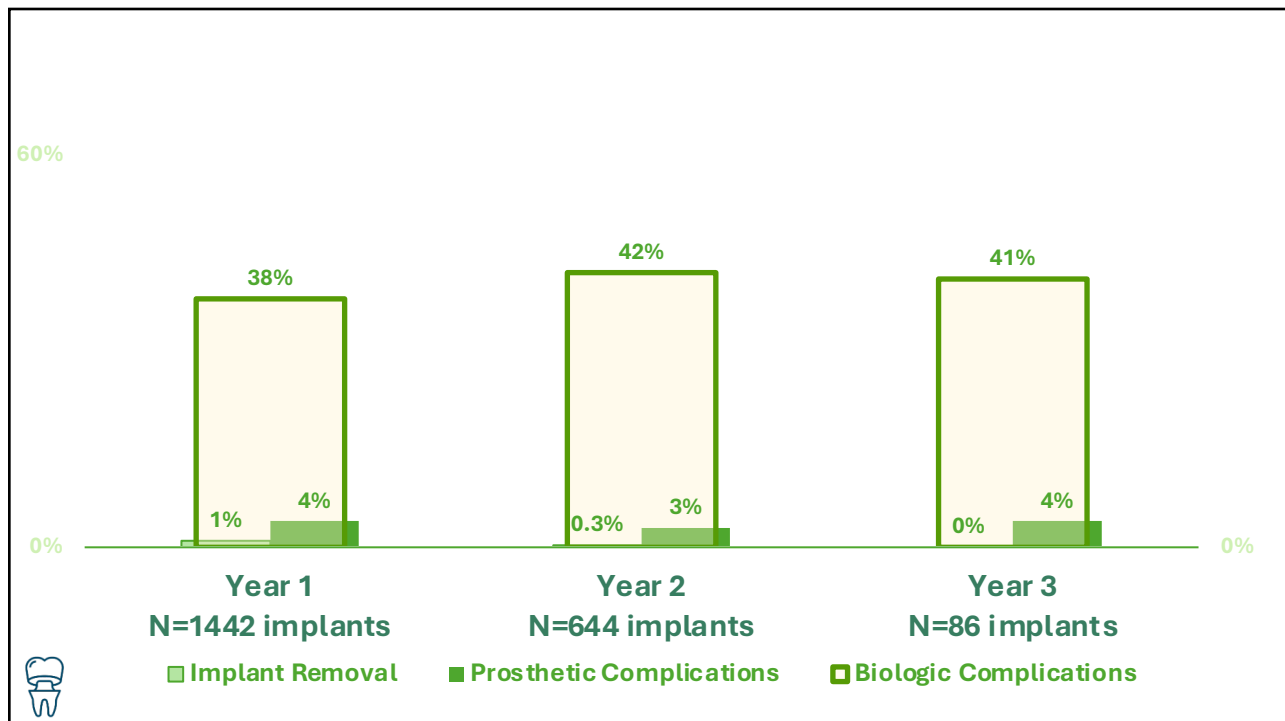
15



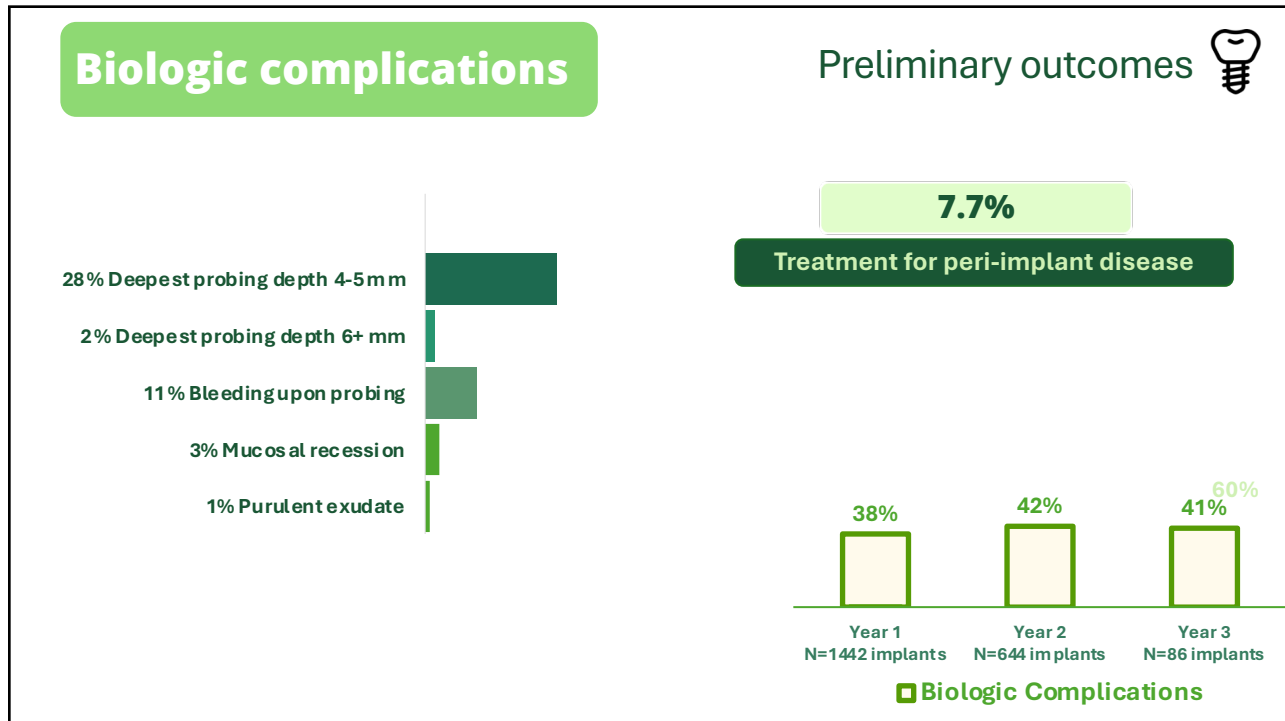
16



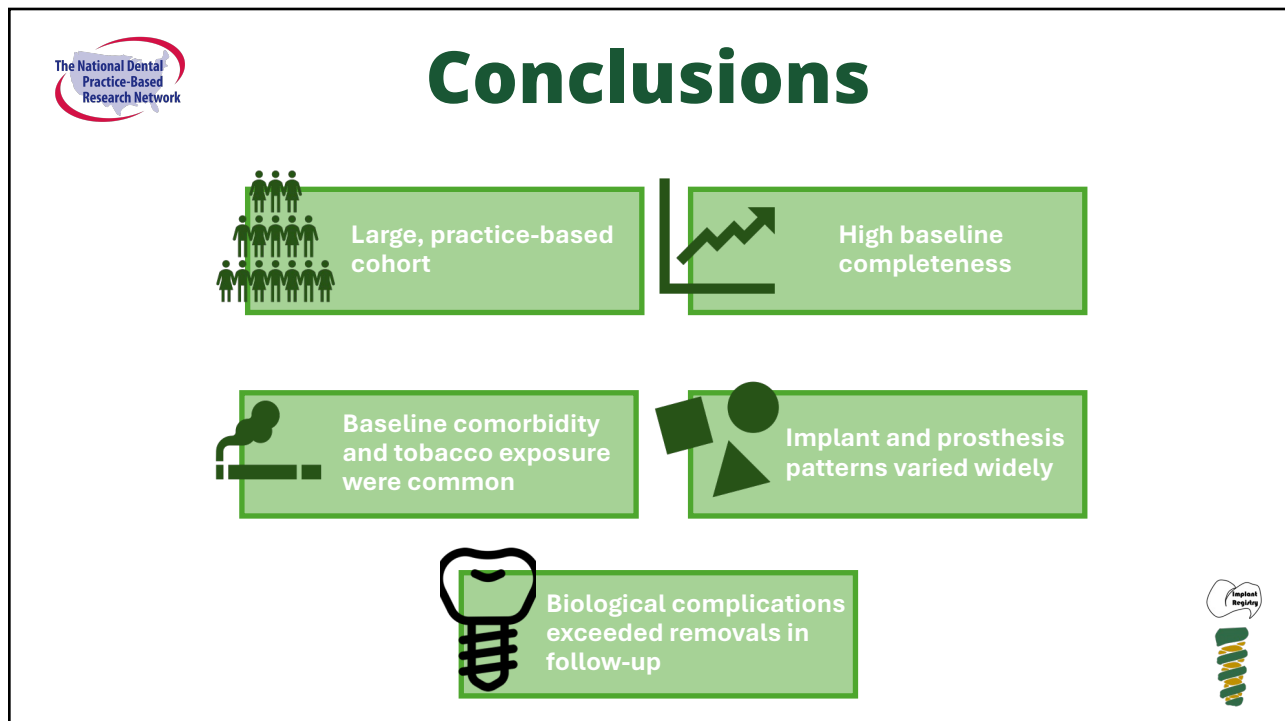
17



18



19



20




|                         |                 |                     |                  |
|-------------------------|-----------------|---------------------|------------------|
| Joana Cunha-Cruz        | Kim Stewart     | Chalinya Ingphakorn | Sacha Reich      |
| Nicolaas Geurs          | Lisa Waiwaiole  | Heather Weidner     | Ashley Spencer   |
| Farah Fahimipour        | Danyelle Barton | Sarah Basile        | Amanda Gillesby  |
| Maninder Kaur           | Danny Johnson   | Rahma Mungia        | Rahma Mungia     |
| Sarah Startley          | David Cochran   | Clarisse Truong     | Hitika Gandhi    |
| Trishathi M. Nandakumar | Muna Anabtawi   | Muna Anabtawi       | Chris Catlin     |
| Ethan Madison           |                 | Brenda Thacker      | Aleena Pottluri  |
| Farah Niyazi            |                 | Vicky Thomas        | Caitlin Sangdahl |
| Ramzi Abou-Arraj        |                 | Rita Cacciato       | Kayla Garcia     |
| Mary-Agnes Mestayer     |                 | Pat Ragusa          | Brittni Ball     |
| Jai Shah                |                 | Kim Johnson         | Natalie Gorman   |

**The National Dental PBRN and the DIRR Study are supported by NIH/NIDCR grants**  
**Please visit our website at [NationalDentalPBRN.org](http://NationalDentalPBRN.org)**




*The nation's network*

21



# Breakout questions:

## Clinical application and discussion



**What do these findings mean for routine implant care?**

1. Which baseline patient factors in this cohort would most change your implant maintenance or recall strategy?
2. Do the preliminary follow-up findings change how you prioritize biologic versus prosthetic complication surveillance in your practice?
3. What should be the single most important chairside message when counseling a patient receiving an implant restoration?
4. The NIDCR is interested in studies focused on “integrating oral health into medical care.” What ideas do you have for oral health practitioners partnering with medical professionals to address specific health issues of patients with dental implants?

22