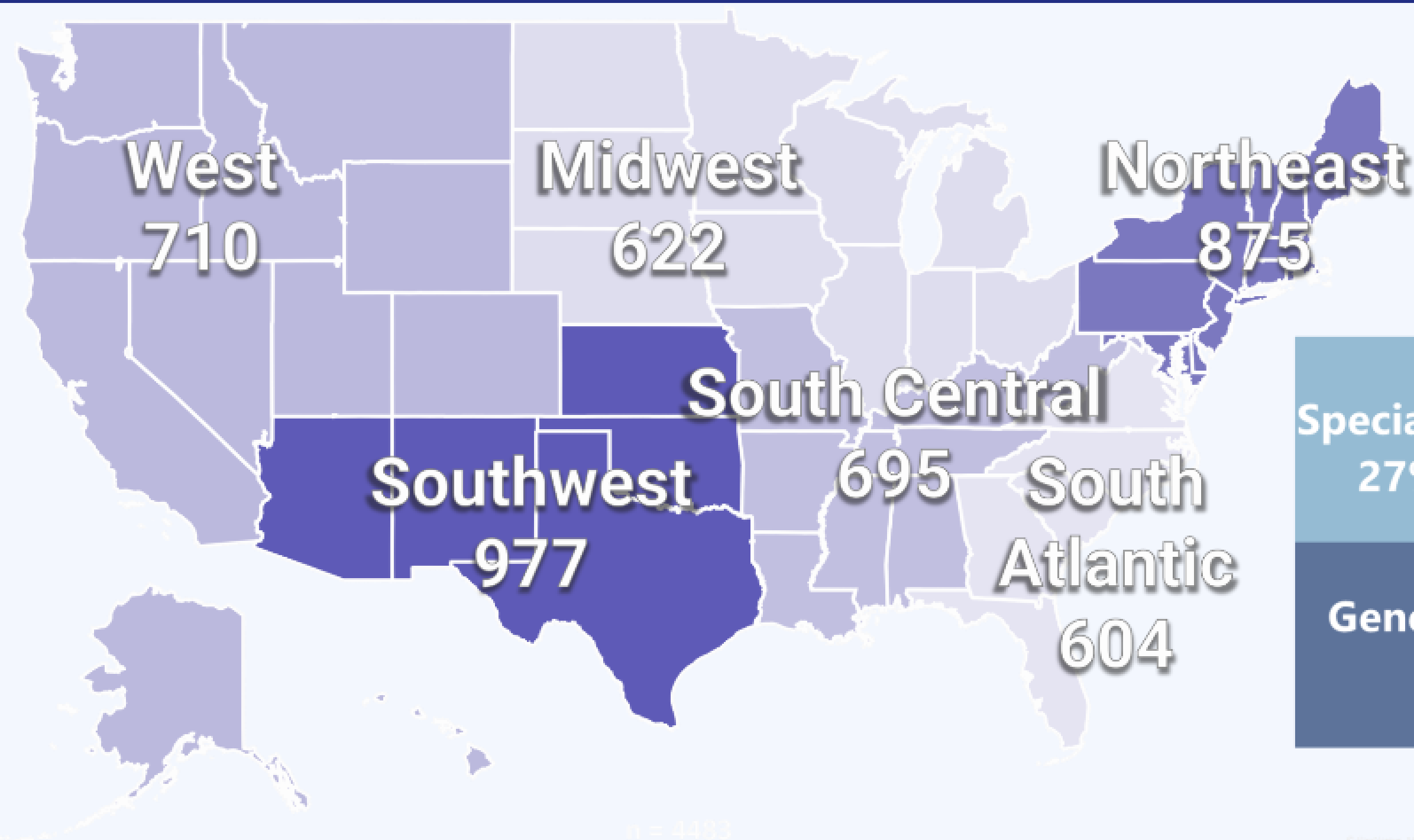


# National Dental Practice-Based Research Network

## Who We Are



**8,400+ members**

**5,675+  
active  
practitioners**

**475+  
practitioners in  
a clinical study**

Specialists  
27%

General Dentists  
73%

The characteristics of our practices, practitioners, and patients show a remarkable range of diversity.<sup>1</sup>

## What We Have Done

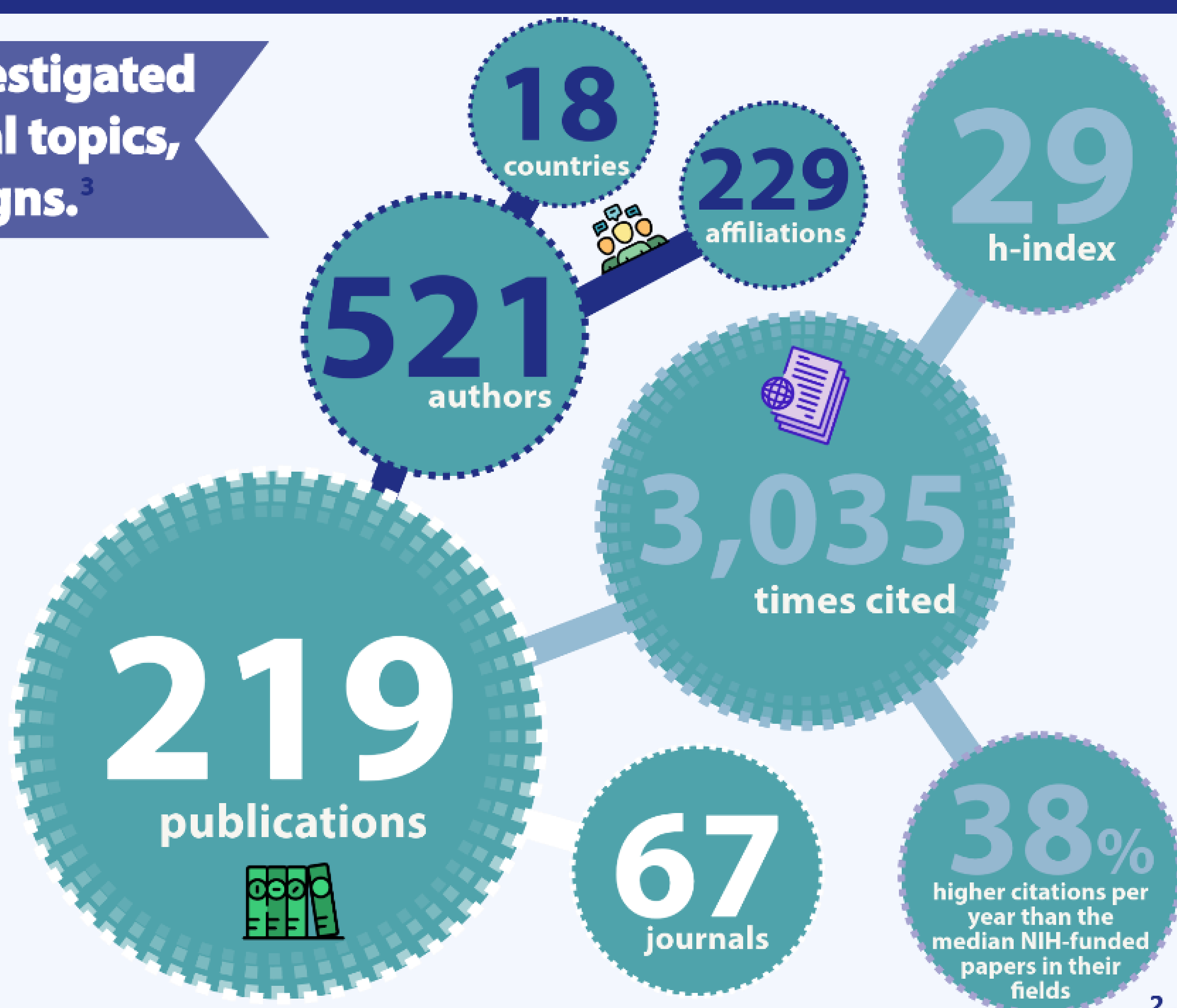
National Dental PBRN studies have investigated an exceptionally broad range of clinical topics, using a wide variety of study designs.<sup>3</sup>

**56**  **STUDIES**

**20,287**  **PRACTITIONERS  
ENROLLED**

**75,311**  **PATIENTS  
ENROLLED**

**790,493**  **PATIENTS'  
HEALTH RECORDS  
ANALYZED**



## Impact for the Future

The two most-recent past NIDCR Directors, while celebrating the 75th NIDCR anniversary, included the Network in the list of greatest accomplishments during their tenure.<sup>5</sup>

A scoping review of dental PBRNs - from investigators outside the Network - provided metrics that ***the National Dental PBRN is the clear leader globally.***<sup>4</sup>

**"The Network  
is still working  
beautifully."**

**NIDCR  
75 YEARS  
LOOKING FORWARD**



1. Cruz J, et al. *J Dent* 2023; 137:104653.  
2. Web of Science & iCite reports  
3. Gilbert G, et al. *J Clin Transl Sci* 2022; 22; 6(1):87.  
4. Canceill T, et al. *J Dent* 2021;104:103523  
5. NIDCR at 75 - Looking Forward. YouTube. <https://www.youtube.com/watch?v=wjk4RP25W0k>