

In This Issue



RESEARCH UPDATES

MEMBER DIRECTORY

SAVE THE DATES

WEBINAR

QUICK POLL RESULTS

NETWORK SOCIAL MEDIA

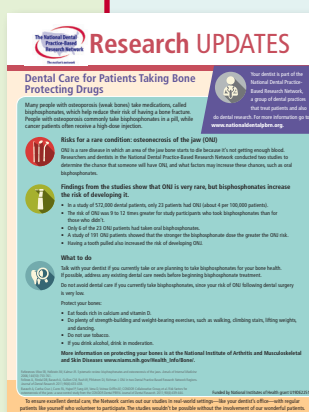
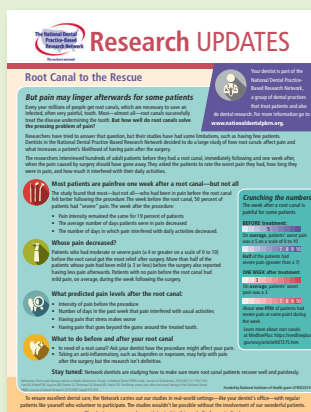


THE NETWORK SERIES: RESEARCH UPDATES

To share results with patients and explain their practical applications, we launched a series in 2017—*Research Updates*. The Network's mission is rooted in research that informs everyday clinical practice. An important component of that research is our patients who participate in the studies.

The summaries provide important new study results and practical advice for patients.

Get the *Research Updates* from the **Resources** section of our website (NationalDentalPBRN.org/research-updates.php) and share them with your patients.



“I love the *Research Updates*, both as a patient and a consumer. They gave me concise, bullet point statements that were easy for me to remember and quote. They made me look more informed of current topics; they worked! Thanks for making my life easier; I can't say that about many things these days!”

—Julie Ann Barna, DMD, MAGD

“I like the patient summaries because they are based on valid research protocols, free from corporate influences, and address issues that arise in everyday clinical practice.”

—Barry J. Currey, DDS

Upcoming in spring 2018:

- ▶ “Do You Need a Crown?”—findings on how dentists decide when to recommend a crown. It suggests questions to ask if your dentist recommends a crown.
- ▶ “Go Easy on Sensitive Teeth”—findings showing dentists don't agree on one particular treatment for sensitive teeth, but most don't recommend anything invasive. It includes tips for what to do if you have sensitive teeth.
- ▶ “Protecting Dental Patients From the Dangers of Opioid”—findings on prescribing opioids safely to dental patients. It provides safety warnings about opioids.



MEMBER DIRECTORY HAS NEW FEATURES!

Have you used our Member Directory recently? We've made improvements. Check it out on the Network website (NationalDentalPBRN.org) by clicking on the **Members** link on the navigation bar.

Specialty

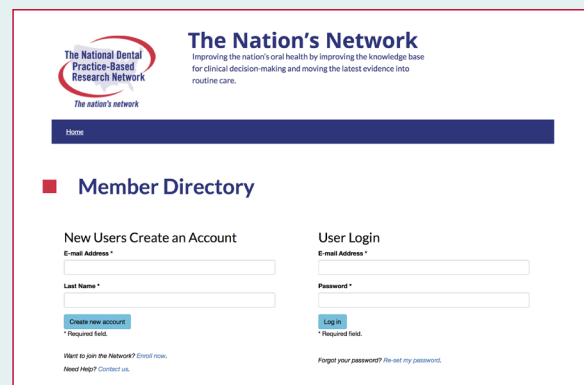
We've enhanced the search filter. You can now find colleagues by region, state, and *specialty*.

About Me

We added spell check to your profile in the **About Me** field. We encourage personal stories—tell us more about yourself!

Multiple Addresses

You can now include more than one address in your profile. This creates more opportunities to connect with your colleagues.



Try it!

Remember—add your specialty; tell a personal story; add more locations. Just click **Edit My Profile** on the toolbar to make the changes.



NATIONAL DENTAL PBRN EVENTS AT AADR IN FT. LAUDERDALE

Join fellow Network members and practitioners at the 47th Annual Meeting of the American Association for Dental Research and 42nd Annual Meeting of CADR at the Ft. Lauderdale Convention Center on March 21–24 to discuss new and innovative dental research and practice. Network members who are not AADR members will have the exclusive opportunity to attend a full day of the AADR meeting (Friday, March 23).

Seventeen abstracts were submitted to the conference to discuss many of the Network studies, such as:

- ▶ Root Canal Treatment
- ▶ Restorative/Endodontic Procedures
- ▶ Dentin Hypersensitivity
- ▶ Electronic and Paper Data Capture
- ▶ Cracked Tooth
- ▶ And more!
- ▶ Patient Enrollment and Logistics

Congratulations to the many practitioners who will be presenting on the National Dental PBRN study results.

National Dental PBRN Luncheon Symposium at the AADR Meeting—Friday, March 23 (Noon–3 p.m.)

Join us for our symposium, **Advancing Research To Integrate Medical and Dental Care**, on March 23. After opening remarks by Martha Somerman, NIDCR Director, the program will include:

- ▶ Two presentations by experts in topics that overlap medicine and dentistry
- ▶ Interactive discussions
- ▶ A panel discussion.



The goal is to come up with strategies to improve the effectiveness of the Network in empowering collaboration among practitioners, clinical researchers, and other stakeholders; expand medical/dental integration; and improve patient care and outcomes.



ANNOUNCING FREE NETWORK WEBINARS!

The Network hosted a webinar, **Opioid Prescribing: ADA Recommendations and Risk Mitigation**, in January discussing dental prescribing practices, risk mitigation implementation, and training experiences related to opioids. Dr. Jenna McCauley, Associate Professor from Medical University of South Carolina, reviewed the history and scope of the opioid epidemic and how it's affecting dentistry. Discussion included ADA's message and guidelines to decrease opioid use in managing acute pain in the dental setting. Knowing the indicators of potential misuse, abuse, diversion, and overdose are vital to mitigating risks.

The webinar will be available late spring on our website (NationalDentalPBRN.org/free-ce.php). You can earn 1.0 CEU.



Jenna McCauley, PhD



Julia Melkers, PhD

Register for the upcoming webinar **The Good, the Bad, and the Unreliable: Awareness, Access, and Assessment of Available Resources for Dental Clinical Practice** on March 6. Join Dr. Julia Melkers, Kimberley Isett, Diana Hicks, and Simone Rosenblum from Georgia Tech School of Public Policy to discuss novel nicotine.

**Join the LIVE webinar on March 6 at 12:30 – 1:30 p.m. EST.
Register today at: <http://bit.ly/2FQ8qUP>.**



QUICK POLL RESULTS: WEIGHING IN ON ROOT CARIES

About half of the more than 460 January Quick Poll respondents encounter 1–5 patients/month with root caries, and over 1/3 see 1–5 patients/week. Over 70% of these patients are treated with a composite restoration and about 1/2 are treated non-operatively with either glass ionomer cement or fluoride varnish.

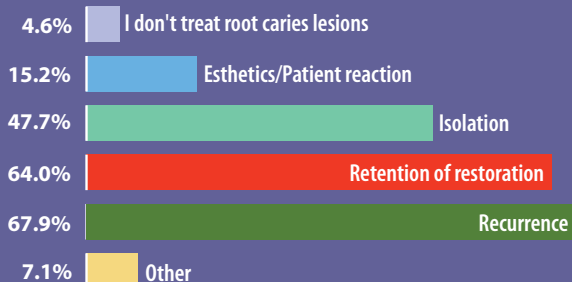
The most frequent problems encountered:

- ▶ Retention of restoration
- ▶ Recurrence of the lesion
- ▶ Isolation

Although isolation methods varied, 83% used cotton rolls. Many also chose to use Isolite or a retraction cord.

Respondents noted problems such as managing xerostomia, post-op sensitivity, and access to the caries.

Most frequent problems when treating root caries lesions



To continue the conversation, go to **Quick Poll Results** in the **Member Forum**.



NETWORK SOCIAL MEDIA HIGHLIGHTS

The Network continues to promote newsletter stories and Quick Polls via social media platforms.

Growth Online:

From December 2016 to December 2017:

Facebook



15.1% increase

Twitter



18.4% increase

LinkedIn



32.5% increase

YouTube



57.5% increase

Newsletters



E-Newsletter

The newsletter is sent to about 5,263 members a month. From December 2016 to December 2017, subscribers have increased by 4.5%.

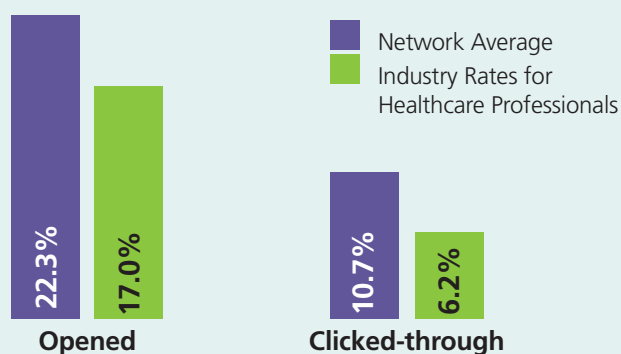


Print Newsletter

Mailed to 6,500 in 2017 and 6,686 in 2018

Newsletter Metrics

The Network newsletter is read at a higher rate than most healthcare newsletters.



The National Dental Practice-Based Research Network
1600 Research Boulevard (WB2825)
Rockville, MD 20850

The nation's network



FIRST CLASS MAIL
US POSTAGE
PAID
SUBURBAN, MD
PERMIT NO. 6379