



# The Nation's Network

Improving the nation's oral health by improving the knowledge base for clinical decision-making and moving the latest evidence into routine care.



Quick Poll Results

Study Updates

Network News

Article of Interest

## Network Studies In Progress

There's still time to participate in February's **Quick Poll** on "Ergonomics and musculoskeletal disorder (MSD) in dentistry."

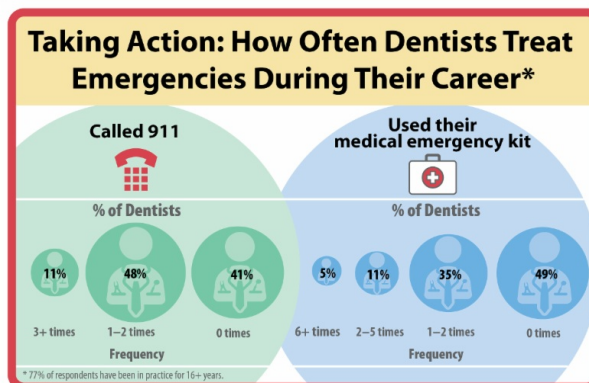
Recently moved?  
New contact information?

Exciting things are happening in The Network. Stay updated and in the know by emailing your Regional Coordinator your updated information.

## Quick Poll Results

### Quick Poll Results- Medical Emergencies Are Infrequent but Worrisome for Dentists

Most dentists are very aware of the potential for a medical emergency, our Quick Poll found. Of our 578 respondents to the poll, 87 percent said they are either very concerned or somewhat concerned about the risk of a medical emergency in their offices. [Read more...](#)



## Study Updates

### Studies Currently Recruiting Practitioners

- Leveraging Electronic Dental Record Data for Clinical Research
- Management of Painful Temporomandibular Disorders (TMD)
- Predicting Outcomes of Root Canal Treatment (PREDICT)

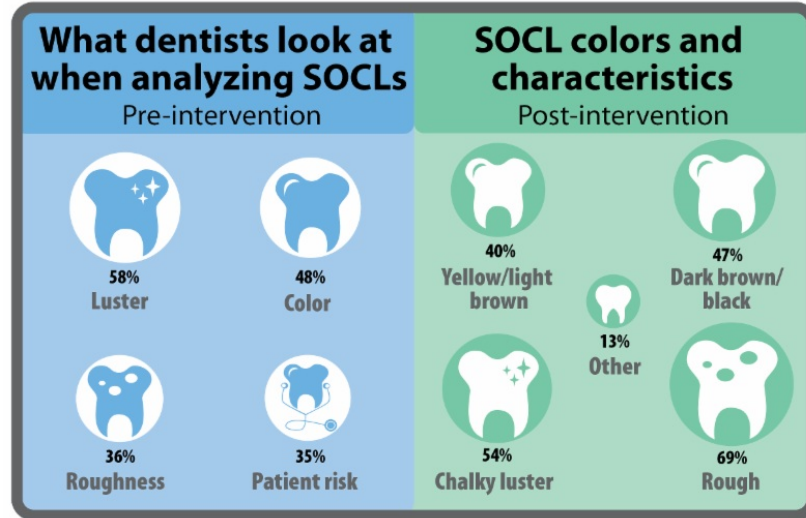
[Read more...](#)

## Network News

[Join our Mailing List](#)

## Summary of Study Results

The summary of study results of the National Dental PBRN study [Decision Aids for the Management of Suspicious Occlusal Caries Lesions](#) is now available on the Network website. This includes descriptions of the [pre-intervention](#) and [intervention](#) phases.



## Save the Date for March Network Regional Meetings and AADR Meeting

Have you registered for one of these two regional annual meetings this month?

### Western and Southwest Regions Meeting

March 25 in San Francisco, CA

Contact: [Stephanie Reyes](#) (210) 562-5654 or [Stevie Hodge](#) (503) 335-6693

### Midwest and Northeast Regions Meeting

March 30-31 in Chicago, IL

Register at: <http://conta.cc/2IO3hFn>  
Contact: [Emily Durand](#) (952) 967-7404 or [Hannah Van Lith](#) (952) 967-7220

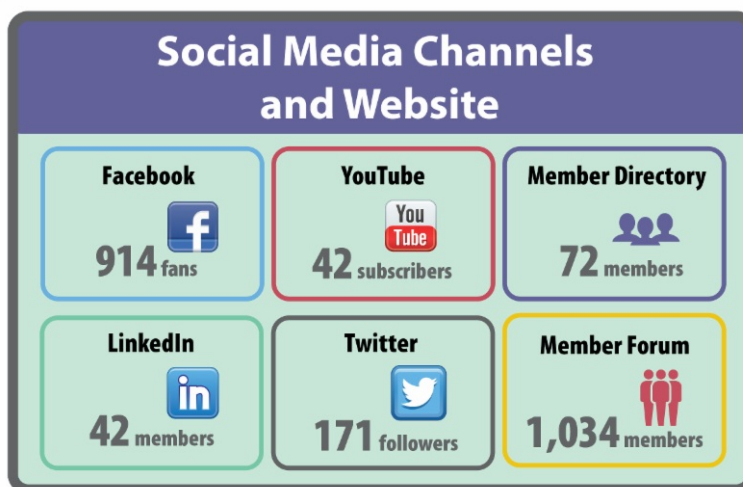


[Read more...](#)

---

## Network Members Engaging on Social Media Channels

Communication is essential to keep members engaged. Through a variety of channels, Network members are obtaining news, study results, and other information. They are also connecting with one another via the Network's Member Forum and new Member Directory. Visit the [Network website](#) or social media profiles to connect today with your colleagues.



---

## Article of Interest

### Study Offers Hints to Detecting Problematic Cracks in Teeth

Many patients have a crack in at least one of their teeth. There are a variety of methods for identifying cracks and determining if they pose a problem. However, cracks can still be difficult to diagnose and frustrating for dentists and patients, researchers write in an article in press in The Journal of the American Dental Association. Cracks often don't show up on an x-ray and many are too shallow to cause pain, although they still pose a risk to the tooth.

After studying 2,986 patients between the ages of 19 and 85 who had at least one tooth with an observable crack, the researchers identified characteristics correlated with a cracked tooth being symptomatic

(causing pain when biting or exposed to cold). About half of the participants had a symptomatic cracked tooth. [Read more...](#)

Copyright © 2017. All Rights Reserved.