



## Quick Poll Results

## Article of Interest

[Engagement in  
National Dental  
PBRN Impacts  
Adherence to  
Evidence-Based  
Treatment of Early  
Dental Decay](#)

## Study Updates

[Spring Into Network  
Studies](#)

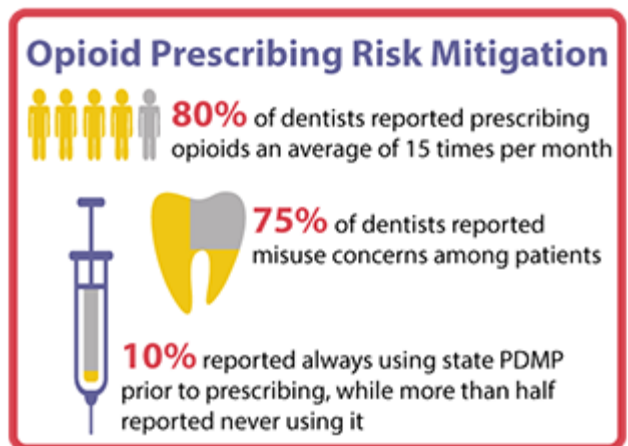
## Network News

### March Regional Meetings

Upcoming regional meetings of the National Dental PBRN are occurring this month in the South Atlantic, South Central, and Southwest regions. Check with your regional coordinator to register or for updates on your meeting.

[South Atlantic:  
The South Atlantic](#)

## Quick Poll Results



The Network's recent poll revealed opioid prescribing risk mitigation strategies had relevance for the majority of respondents. [Read More...](#)

## Article of Interest

### Engagement in National Dental PBRN Impacts Adherence to Evidence-Based Treatment of Early Dental Decay

A recent study found that dentists engaged in the National Dental Practice-Based Research Network (PBRN) were more likely to make practice changes consistent with current evidence on treatment of early-stage caries (dental decay). The study also found that these dentists influenced colleagues not engaged in the PBRN. Members of our Network co-authored the results of this research, published in the

Region will have its annual meeting for the northern part of the region in Atlanta on March 28, 2015, from 10 a.m. to 1 p.m. To find out more and register for FREE, [click here](#).

South Central:  
March 6-7, 2015  
Hoover, AL

Southwest:  
March 19-20, 2015  
San Antonio, TX

[Join our Mailing List](#)

December 2014 issue of *Implementation Science*.  
[Read more...](#)

## Study Updates

### Spring Into Network Studies

The Network studies for 2015 are underway. If interested in participating, learn more about current and upcoming studies and [requirements](#) for participation. [Read More...](#)