



Network News



Quick Poll
Results

Study Updates

Network News

Article of
Interest

Network
Staff Member of
the Month

Quick Poll -
Silver Diamine
Fluoride

There's still time to participate in October's [Quick Poll](#) on "Silver Diamine Fluoride (SDF)".

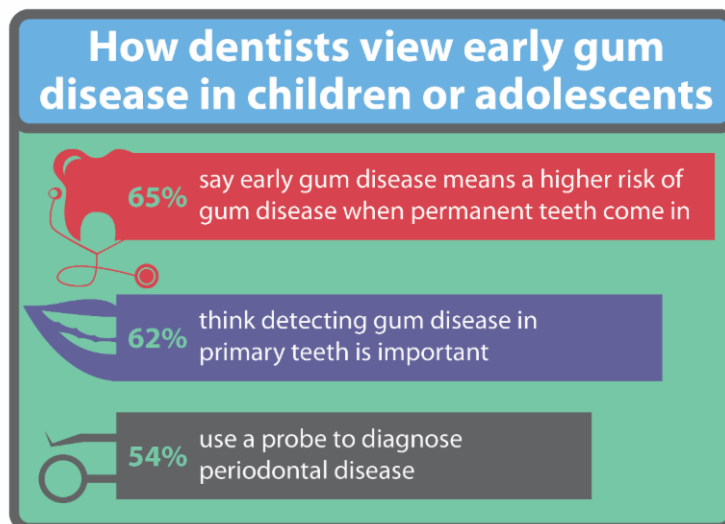
Recently moved?
New contact
information?

Exciting things are happening in The Network. Stay

Quick Poll Results

Quick Poll Results: Are You Probing For Periodontal Disease in Young Patients?

The prevalence of aggressive periodontal disease in children and young adults in the U.S. is around 1 to 2 percent,[1] studies show. Detecting the disease in its early stages is difficult. The Network is looking into whether to study the reliability of current approaches for diagnosing periodontal disease in kids. In the September 2016 Quick Poll, Network members were asked about their use of a periodontal probe to detect gum disease in children and young adults. [Read more...](#)



[1] Shaddox LM, Huang H, Lin T, Hou W, Harrison PL, Aukhil I, Walker CB, Klepac-Ceraj V, Paster BJ. Microbiological characterization in children with aggressive periodontitis. Journal of Dental Research. 2012; 91(10):927-933. Accessed at <http://www.nidcr.nih.gov/oralhealth/Topics/GumDiseases/Periodontitis.htm>.

updated and in the know by emailing your Regional Coordinator your updated information.

[Join our Mailing List](#)

Study Updates

Studies Currently Recruiting Participants

- Leveraging Electronic Dental Record Data for Clinical Research
- Management of Painful Temporomandibular Disorders (TMD)

[Read more...](#)

Network News

Join Dental Practitioners and Researchers in an Interactive Practice-Based Research Symposium

The National Dental PBRN will host its annual symposium on practice-based research at the International/American/Canadian Association for Dental Research (IADR/AADR/CADR) General Session & Exhibition in San Francisco on the afternoon of Friday, March 24, 2017.

This year's symposium, "**Engaging Patient Perspectives in National Dental PBRN Research,**" will focus on



engaging patients as stakeholders in the National Dental PBRN. Patients and patient advocates will join researchers, practitioners, and policymakers in discussions of patients' roles in Network research and implications of study results for practice. Our discussion will build upon the concept of the National Dental PBRN as a Learning Health System and how patient perspectives can be incorporated into practice-based research. [Read more...](#)

A.T. Still Research Institute Center for Oral Health Research invites you to attend its inaugural Scientific Symposium, *Supporting Best Practices in Education and Patient Care.*

Please join us for our first Scientific Symposium on Saturday, January 21, 2017, from 8 a.m. to 3 p.m. at the Arizona School of Dentistry & Oral Health (ASDOH) in Mesa, Arizona. Our target interdisciplinary audience is dental and dental hygiene clinicians, academicians and researchers, dental and dental hygiene students, nurses, physicians, and scientific and industry partners from Arizona and the surrounding region. The conference is designed to bring the Arizona oral healthcare and research communities together to:

- Share new knowledge obtained through original research
- Translate current findings from research to support best practices
- Increase and diversify the number of individuals engaged in oral health research
- Cultivate collaborative partnerships to improve the oral health of the community

Article of Interest

Dentists' Choice of Crown Materials Depends on Many Factors, Not Just What Works Best

Dentists have many different materials to choose from when making a dental crown. Their choice may depend on the location of the tooth, importance of esthetics to the patient, masticatory factors, or the patient's finances. However, a new study in the *Journal of Dentistry* found that dentists' decisions about what material to use are also affected by factors unrelated to the patients' preferences or needs.

In the study, 1,777 Network dentists answered questions about themselves and their practice, and about what material they would use for a single-unit crown on an anterior and a posterior tooth in a healthy, financially able, 40-year-old man. [Read more...](#)

Network Staff Member of the Month

Network Staff Highlight-Staff at Dr. Jocelyn McClelland's Office

This month we're highlighting the staff at Jocelyn McClelland's office in Alabaster, AL. The staff-Monica Payne, Jill McNeel, Alicia Fuller, Marion Lynn Stewart, and Kristie Hall-enjoy participating in research projects the practice does through the Network.



Initially, everyone thought that being part of the Network would disrupt the everyday office routine but they, along with Dr. McClelland, have come to find out this is not the case. "We have enjoyed being able to keep up with current trends happening in dentistry and think it is exciting to be a part of a study that could potentially change the way dentistry is practiced in the future." [Read more...](#)