



The Nation's Network

Improving the nation's oral health by improving the knowledge base for clinical decision-making and moving the latest evidence into routine care.



Quick Poll Results

Study Updates

Network News

Article of Interest

Network Studies In Progress

There's still time to participate in March's **Quick Poll** on "Cement-retained vs. screw-retained implant restorations."

Recently moved? New contact information?

Exciting things are happening in The Network. Stay updated and in the know by emailing your Regional Coordinator your updated information.

Quick Poll Results

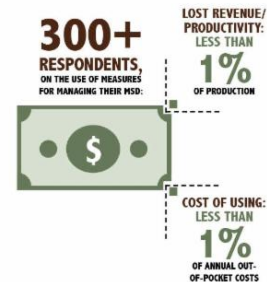
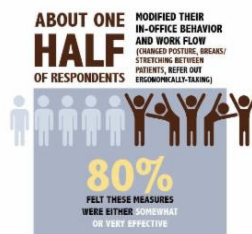
In Pain? You're Not Alone

Almost 95 percent of the 500 practitioners responding to our February 2017 Quick Poll have had work-related musculoskeletal disorders. About two-thirds said they've had neck pain. About half the group has had shoulder pain, and half the group also checked yes for lower back pain. One-third of respondents have had upper back pain, and one-third have had wrist and/or hand pain. [Read more...](#)



OF 500 RESPONDENTS, ABOUT TWO-THIRDS HAD NECK PAIN, ONE-HALF HAD SHOULDER PAIN, ONE-HALF HAD LOWER BACK PAIN, AND ONE-THIRD HAD UPPER BACK OR WRIST/HAND PAIN.

TWO-THIRDS USE OUT-OF-OFFICE REGIMENS, SUCH AS:



Study Updates

Studies Currently Recruiting Practitioners

- Management of Painful Temporomandibular Disorders (TMD)

[Read more...](#)

Network News

UAB Magazine Features the Network

The Network is featured in the current issue of *UAB Magazine*, published by The University of Alabama (UAB) at Birmingham, the Network's administrative base. The article, [Hometown Discoveries-How grassroots research is reshaping dental care](#), takes a broad look at how and why the Network got started and some of its accomplishments. For the article, in addition to Dr. Gerald Anderson of Selma, AL and Dr. Gregg Gilbert, the National Network Director, Rosalind Fournier interviewed Dr. Mary Wallace of Rainbow City, AL. Dr. Wallace explained that a key benefit of her network participation is that the network does research "about what really works, and what is pertinent to the everyday dentist. That's what we need."

South Atlantic 2017 Regional Meeting

The annual practitioner meeting for the South Atlantic Region (Florida, Georgia, South Carolina, North Carolina, and Virginia) took place in Atlanta on January 27 and 28. This is the first time the meeting was held outside of Gainesville in a more regionally central location. [Read more...](#)



Article of Interest

Diagnosing and Caring for Sensitive Teeth

When patients complain of short, sharp dental pain and there's no defect or disease, the problem is likely sensitive dentin that's exposed to cold, brushing, or another stimulus. Most dentists use multiple methods to diagnose and manage this common problem, according to a 2017 Network study of 185 dentists across the country who replied to an online questionnaire. The practices used for diagnosing and managing hypersensitivity didn't vary a lot by practitioners' ages or locations. [Read more...](#)

